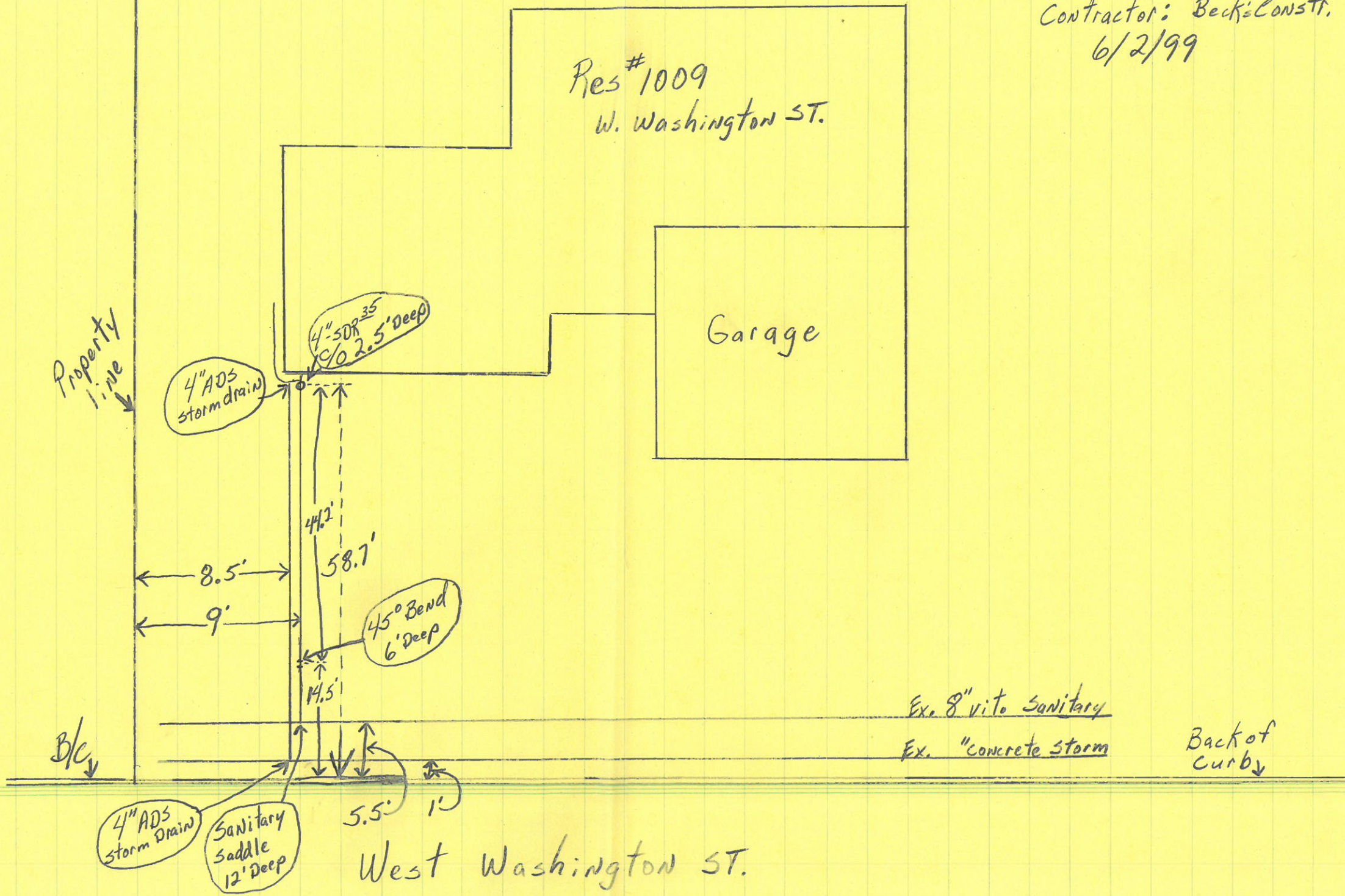


Contractor: Beck's Constr.  
6/2/99



Res #1009  
W. Washington ST.

Garage

Property line

4" ADS storm drain

4" SDR<sup>35</sup>  
C/O 2.5' Deep

45° Bend  
6' Deep

4" ADS storm drain

Sanitary Saddle  
12' Deep

Ex. 8" vito Sanitary

Ex. "concrete storm

Back of curby

West Washington ST.